



**AABSyS INFORMATION TECHNOLOGY PRIVATE LIMITED**

Plot No.E/54 & E/54/1, Infocity, Chandaka Industrial Estate, Patia, Bhubaneswar Pin-751024

Telephone: India: +91 (674) 662 1007/8 | Telefax: +91 (674) 662 1000

Email: [info@aabsys.com](mailto:info@aabsys.com) | Website: [www.aabsys.com](http://www.aabsys.com) | [www.bloochip.com](http://www.bloochip.com)

**AABSyS**

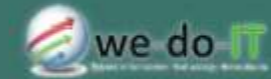
CAD · GIS · Software  
ISO9001:2008, ISO14001:2004



**GLOBAL FOOTPRINTS**

- AUSTRALIA
- BELGIUM
- CANADA
- CAYMAN ISLANDS
- CZECH REPUBLIC
- GERMANY
- INDIA
- IRELAND
- ITALY
- NETHERLANDS
- NEW ZEALAND
- SOUTH AFRICA
- SOUTH EAST ASIA
- SWITZERLAND
- UAE
- UK
- USA

Preferred outsourcing partner for customers around the world



**AABSyS**  
 CAD · GIS · Software  
 ISO9001:2008, ISO14001:2004



## COMPANY | Profile

### MANAGEMENT:

Directors with backgrounds in management, engineering, marketing and finance manage the company professionally. The management has ensured that AABSyS is a preferred IT & Geospatial outsourcing vendor for Global Customers.

### OFFICE AND TEAM:

AABSyS's state-of-the-art infrastructure is located in Bhubaneswar, Orissa, one of India's prime information technology centers and offers a professional working environment. Our strength lies in our team of motivated, well-qualified and experienced professional who are dedicated to efficient and on time delivery of quality services that meet our customer's highest standards. Our team includes experienced project managers, highly skilled software developers, CAD/GIS professionals and remote sensing and photogrammetry professionals.

AABSyS has its core competencies in the areas of geographic information system (GIS), computer aided drafting (CAD), computer aided facility management (CAFM), remote sensing, photogrammetry and software development, such as in GIS based application development with solutions for natural resource management, urban planning, environment, utility and e - governance.

### HIGHLIGHTS:

- Established in 1998
- ISO 9001:2008 and ISO 14001:2004 Certified Quality Processes
- Worldwide customer base
- State-of-the-art infrastructure for 300 IT professionals
- Memberships with leading organizations
  - IACC: Indo American Chamber of Commerce
  - NASSCOM: National Association of Software and Services Companies
  - STPI: Software Technology Parks of India
  - CITE: Confederation of Information Technology Entrepreneurs, Orissa





## GIS | Utilities

AABSyS has extensive experience and expertise in data capturing of utility networks such as electrical, water, gas, sewage & telecom.

Our services include data capturing, network rectification, network maintenance and network adjustment on leading GIS platforms such as Smallworld and ArcFM. The process includes data capturing as per dimensions, database creation and linking spatial and non-spatial data. AABSyS works directly on customer's GIS systems through secured and remote access via CITRIX. Large scale digitization of utility networks are also captured using AutoCAD & Microstation softwares on site.

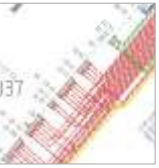
### QUALITY ASSURANCE:

AABSyS's online query management system ensures that queries related to projects are directly raised by operators and published to the customer with pictures and descriptions. This allows the customers to understand and review "open queries" relating to large-scale projects. Customers give feedback directly on the Query Management System (QMS). This facilitates large-scale execution of projects at ease.

Our quality procedure involves multiple color plots at different stage of production, manual and on-screen cross check of electronic files against source documents and utilization of automated quality tools and routines to ensure 100% quality.

### AABSyS PROVIDES:

- GIS – AM/FM – LIS data capture & database creation (electricity, gas, water, sewage, and telecom network)
- Spatial and non-spatial capturing & linking
- Graphical representation and attribution
- Network rectification
- Network adjustment
- Operator assisted tracking
- Post-vectorizing data cleaning & normalization
- Coordinate system conversion
- Data assignment & analysis
- Database development & programming



### PLATFORMS:

- Smallworld
- ArcFM
- ArcFM UT
- ArcGIS
- AutoCAD
- Microststion
- Adjust-IT

More than 50,000 kms of  
Utility Network captured



## GIS | Mapping Remote Sensing | Photogrammetry

AABSyS provides high quality and cost-effective services for GIS Remote Sensing, Photogrammetry and Mapping.

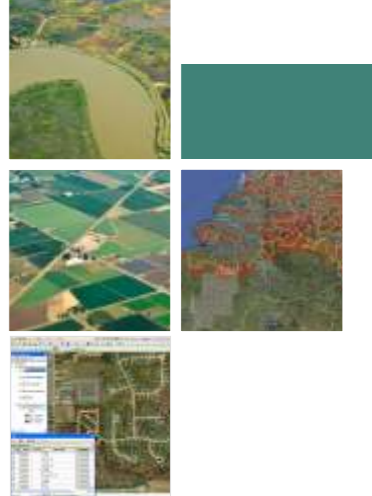
**MAPPING SERVICES** include large scale data conversion from hard copies and satellite imageries, georeferencing, edge-matching, topology creation, merging and map production.

**GIS SERVICES** include map creation, interpretation & analysis, system design & architecture, data management & maintenance, etc.

### REMOTE SENSING SERVICES

- Agriculture crop mapping yield estimation, suitability assessment studies, change detection studies, crop model development, damage and land degradation assessment studies.
- Forest structural assessment, forest management and sustainable livelihood development, species level classification and bio-diversity mapping, change detection studies, environmental impact assessment studies.
- Mining & Geology site suitability analysis, mineral mapping to identify potential mineral zones, lithological structural features, geological database creation, map updation for mineral exploration.
- Environmental impact assessment
- Wireless Telecommunications : AABSyS supplies a wide range of high quality and up-to-date high resolutions spatial datasets upto 2.5m and 5m resolution. Layers available: Clutter, DTM, Vectors & Building Heights

**PHOTOGRAMMETRY SERVICES** include aerial triangulation, creating mosaics, edge matching, tile generation in user defined dimensions, planimetric feature extraction, contour generation, orthophoto generation, ortho rectification, creation of DEM, DTM and DSM, LIDAR data processing and 3D city modeling



### PLATFORMS:

- AutoCAD Map
- ArcGIS
- Miner & Miner ArcFM
- Microstation
- MapInfo
- ERDAD IMAGINE
- ILWIS
- ERMAPPER
- LPS (Leica Photogrammetry Suite)
- SSK



## GIS | Survey

AABSyS has prepared final site survey plans from onsite surveys using GPS coordinates, survey notes and hand sketches.

### OUR SERVICES INCLUDE:

- Site survey plan interpretation
- GPS data migration
- Field sketches and survey coordinates interpretation
- Map preparation based on GPS data
- Contour development
- Telecom survey plan preparation
- Mining map preparation
- Digitization

Our quality procedure involves multiple colour plots at different stages of production, manual and on-screen cross check of electronic files against source document and utilization of automated quality tools and routines to ensure high quality.



### PLATFORMS:

- Total Station Survey
- DGPS Survey (Trimble)
- GPS Survey (Garmin)



## CAFM / CAD 2D & 3D | Architectural, Facility & Engineering Drawings

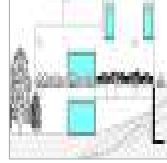
AABSyS provides services for large-scale 2D & 3D CAD drafting, paper to CAD conversion, raster to vector conversion for architectural & facility management plans, plumbing plans, structural plans and engineering drawing on leading CAD platform such as AutoCAD & Microstation.

AABSyS has knowledge in CAD programs such as ArchiCAD, ADT, Revit and 3D Studio Max. We provide 3D views, sectional plans and elevation plans based on customer's requirements.

AABSyS CAD professionals possess high skills and experience in preparing 3D models, rendering and walk throughs for residential and commercial buildings. Specific attention is given for grid alignment, capturing dimensions accurately, drafting of slanting roofs etc.

AABSyS works in citrix on AutoCAD, Archibus and CAD Overlay using web based facility management applications. The typical work includes drafting of floor plans based on paper drawings or rough sketches of building plans. gathering and preparing building and property information from supplied datasheets or field sketches, assigning space characteristics and usage information, including employee or occupancy data and placing workplace assets such as furniture and equipment.

Our quality procedure involves multiple color plots and different stages of production, manual and on-screen cross check of electronic files against source documents and utilization of automated quality tools and routines.



### PLATFORMS:

- AutoCAD Map
- Microstation
- ArchiCAD
- Vectorworks
- 3D Studio Max
- ADT
- Revit



## GIS / IT | Application Development

AABSyS specializes in providing user-friendly, reliable and efficient solutions. We have rich expertise in GIS application development.

### OUR GIS SERVICES INCLUDE:

- Web based application development
- Design, development and maintenance of customer geospatial databases
- Database migration on cross platforms
- Application migration on cross platforms
- Vehicle tracking system
- Mobile spatial information system
- Development of industry standard spatial information systems
- GUI (Graphical User Interface) development
- SDI (Spatial Data Infrastructure)
- Open source environment

Bloochip is the brand of our IT division. Our software solutions include simplifying complex administrative and management procedures on web based frameworks.

### OUR IT SERVICES INCLUDE:

- Content management system integration
- Web portal design and development
- Web enabling of legacy systems
- Management Information Systems
- Custom database design
- Desktop application programming



### PLATFORMS:

- ESRI – ArcGIS, ArcGIS Server & ArcGIS Engine
- Miner & Miner – ArcFM
- GE Small World – Small world Core, SIAS
- MapInfo – MapInfo Professional, MapX, MapXtreme
- Open Source – GeoServer, MapServer, OpenLayers, LEICA - ERDAS Apollo
- PHP
- ASP.NET



## INFRASTRUCTURE | Facility

Fully equipped state-of-art IT infrastructure located in Bhubaneswar's Infocity, well connected to national and international destinations.

### HIGHLIGHTS:

- Dedicated software development centre spread across 43,000 sq ft for 300 IT professionals
- State-of-the-art workstations
- Central air-conditioning
- 15 Mbps dedicated high speed internet bandwidth access
- 24 hour IT support
- Firewall and network security
- Power back-up and generator
- Conference rooms
- Canteen and relaxation rooms
- Private security
- Parking



## LOCATION | Bhubaneswar

- Bhubaneswar is one of the fastest growing IT destinations in eastern India
- Proximity to research & education organizations and universities of repute with excellent pool of well-trained university graduates
- Beautiful campus, excellent climatic conditions
- Well connected to National and International destinations by road, rail and air
- Popular tourist destination – Bhubaneswar, a “City of Temples”
- Close proximity to excellent beaches, forest, wildlife sanctuaries and nature parks
- Golf course inside Infocity campus



## ADVANTAGE | AABSyS

- Cost effective outsourcing destination
- Global market experience
- ISO 9001:2008, ISO 14001:2004 Certification
- State-of-the-art infrastructure with excellent working environment
- Adherence to TAT (Turn Around Time)
- Flexible production schedules
- Well-trained & skilled professionals with diverse backgrounds and experiences
- Short notice capacity expansions
- Multi Lingual Support: English, German, French, Hindi, Oriya, Tamil, Malayalam
- Assured information security and confidentiality

## ONE OBJECTIVE Make Our Customers Grow

Disclaimer: All trade names, logos, product names and trademarks mentioned belong to the respective owners.