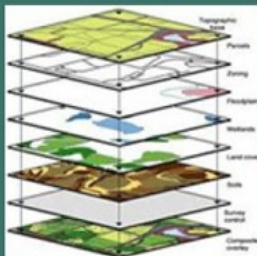
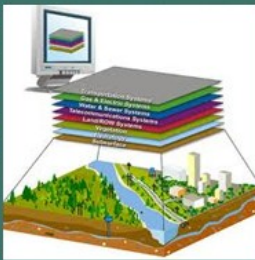
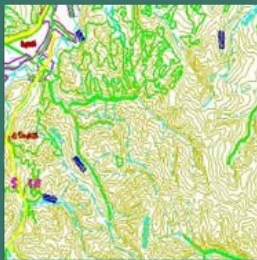
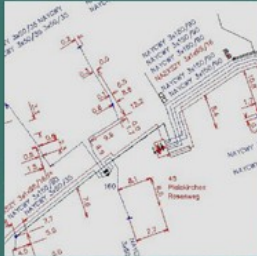


AABSYS GEOSPATIAL FACILITIES - GIS



AABSyS INFORMATION TECHNOLOGY PVT LTD

E/54 and E/54 /1, Infocity, Chandaka

Industrial Estate, Patia, Bhubaneswar-751024, INDIA

Tel: +91- 8093055570, Fax: +91 (674) 662 1000

E-mail: bizhead.gis@aabsys.com (or) sales@aabsys.com

Web: <http://www.aabsys.com>

TABLE OF CONTENTS | AABSyS Company Profile

1	AABSyS Brief Company Profile	3
2	Infrastructure	4
3	Our Services in GIS	6
4	Our Experience in GIS	8
5	GIS - Capabilities	9
6	Office Locations	12

BRIEF COMPANY PROFILE OF AABSYS IT PVT. LTD

1	Name and Address	:	AABSyS IT Pvt. Ltd. Plot No. E/54 and E/54 /1, Infocity Chandaka Industrial Estate, Patia Bhubaneswar-751024, Orissa, INDIA
	Contact person	:	P. Ravi Head of Business Cell: +91-9989545240
	Email ID of contact person	:	ravi.pekala@aabsys.com arun.patnaik@aabsys.com
	Year of Establishment	:	1998
2	Quality Certification	:	ISO 9001:2008 & ISO 14001:2004
3	Name of the Directors	:	Mr. Arun Patnaik Mr. Ajay Patnaik Mr. Binod Mahanty
4	Memberships at reputed organizations	:	NASSCOM: National Association of Software and Services Companies STPI: Software Technology Parks of India IACC: Indo-American Chamber of Commerce DGFT: Directorate General of Foreign Trade
5	Experience in Geospatial services	:	12 years

INFRASTRUCTURE



AABSyS's state-of-the art infrastructure is located in Infocity, Bhubaneswar, Orissa, one of India's prime information technology centers and offers a professional working environment. It is well connected to National and International destinations by road, rail and air and is situated in close proximity to International hotels. The presence of many engineering colleges and research institutions in Bhubaneswar assures the disposal of a pool of highly educated, young computer engineers and IT professionals.

INFRASTRUCTURE & FACILITIES

- Dedicated software development center spread across 43,000 sq.ft for 350 IT professionals.
- Plotters, scanners and printers apart from other supporting systems
- Licensed software's for all production processes
- Central air-conditioning
- Dedicated high speed internet bandwidth access
- 24 hours IT support
- Firewall and network security
- Power back-up and generator
- Conference rooms
- Canteen and relaxation rooms
- Private security
- Parking

WORKING ENVIRONMENT

- Big open hall of production lab gives a sense of openness of thinking and white color helps to give energy for a peaceful creative thinking
- Central Air conditioning keeps the work place at a cool condition
- Conference room is equipped with all facility and furniture, which helps to conduct meetings and discussions.
- A beautiful garden having lush green field and many medicinal plants helps employees to re-energize themselves.

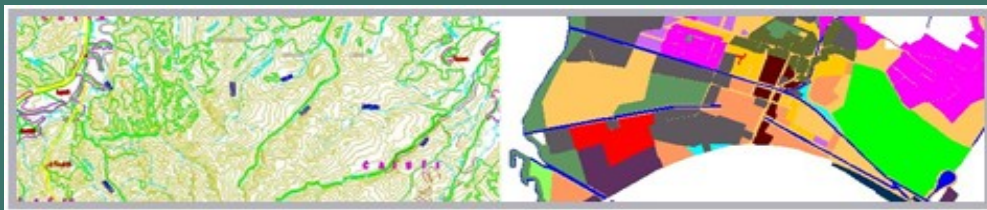


OUR SERVICES IN GIS

AABSyS offers GIS services in following areas:

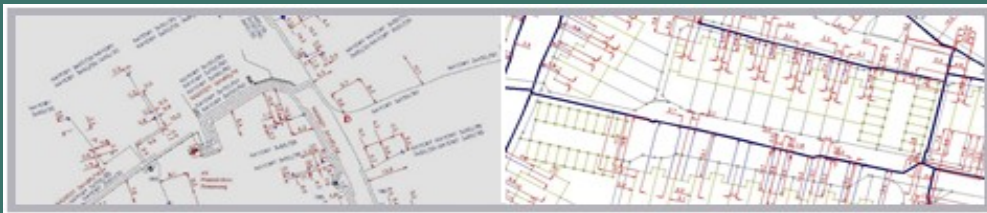
TOPOGRAPHIC AND CADASTRAL MAPPING SERVICES

At AABSyS, we offer services in Topographic Mapping and Cadastral Mapping. AABSyS executed a large-scale Topographic mapping and 3D topographic mapping project for the entire south of Belgium covering approximately 5000 square kilometers of area. AABSyS has similarly executed several topographic mapping and 3D topographic mapping projects for its customers in Germany, Switzerland, Italy and The Netherlands



UTILITY MAPPING SERVICES

AABSyS Team offers utility conversion services for utility supply lines; Water mains, data lines, telephone lines, power lines, gas mains, and sewer lines. AABSyS can help in documenting vital underground and overhead assets digitally. We are experienced using multiple GIS platforms including AutoCAD, Microstation and other high-end software's. We specialize in utility mapping which consists of many different services including full system digitization, system modeling, land base creation, revisions, work order updates, circuit map creation, raster to vector map conversion etc



MUNICIPAL GIS

AABSyS Team got strong domain knowledge in developing a municipal GIS system to manages various tasks of a municipality such as Property Tax, land property details, Birth and Death Registration, Socio Economic Data management & Holding registration etc.



GIS DATA CAPTURE SERVICES

AABSyS uses following techniques for GIS Data capture in varied fields like Thematic Maps, Electrical power networks, Navigation data, Utility infrastructure, Land records and survey data & Environmental and geological etc.,

- Remote sensing and surveying techniques
- Scanning, manual digitizing, vectorization, photogrammetry, and COGO feature construction

PARCEL MAPPING SERVICES

AABSyS has provided the parcel maps to Urban and Rural governing bodies for Land administration & property registration activities; Municipality planning & Urban development to restore analytical data which is crucial for enhancing the operational abilities.



GIS APPLICATION DEVELOPMENT SERVICES:

- Web based Application Development
- Design, Development and Maintenance of Geospatial Databases
- Database Migration on Cross Platforms
- Application Migration on Cross Platforms
- Mobile Spatial Information System
- SDI (spatial Data Infrastructure)
- Open Source Environment



Our software development solutions include simplifying of complex administrative and management procedures on web based frameworks:

- Content Management System Integration
- Web Portal Design and Development
- Web Enabling of Legacy Systems
- Management Information Systems
- Custom Database Design
- Desktop Application Programming

OUR EXPERIENCE IN GIS

AABSyS offers Geospatial solutions across a wide range of mapping software platforms. AABSyS technical resources are having sound knowledge of software, quality processes to provide services in GIS System Development and Implementation, off-the-rack as well as bespoke GIS Application Development, Testing and Maintenance, Data Design and Modeling, Migration, Capture, Validation and Maintenance (including remote maintenance) for Utilities, Urban development, Forest / Natural Resources, Environmental, & Transportation sectors.

AABSyS skills include knowledge in GIS programs such as ESRI, ArcFM, GE Small World, MapInfo, Bentley, Open Source and LEICA's ERDAS Apollo.

AABSyS's online query management system ensures that queries related to projects are directly raised by operators and published to the customer with pictures and descriptions. This allows the customers to understand and review "open queries" relating to large-scale projects. Customers give feedback directly on the Query Management System (QMS). This facilitates large-scale execution of projects at ease.

Our quality procedure involves multiple color plots at different stage of production, manual and on-screen cross check of electronic files against source documents and utilization of automated quality tools and routines to ensure 100% quality.

We follow strict and ethical business practice at our work place. We ensure use of licensed software's for all our project work. We promote good and friendly work environment leading to employee growth and high levels of employee satisfaction and that promotes high employee retention in our company. AABSyS software training policy ensures that all our resources have good knowledge of software, specifications / requirements, quality processes, and methodologies. Our entire project team goes through multiple trainings before joining a project, thus we ensure quality deliveries, high levels of performance efficiency and customer satisfaction.

GIS - CAPABILITIES

INDUSTRY	DESCRIPTION	STANDARDS FOLLOWED	HIGH SKILLS IN	TECHNOLOGIES
Municipality, Geological, Environmental, Mining	Digitization, attribution and georeferencing of detailed cadastral maps, City plans, Road network, and other attributes Land use classification, processing of satellite data	As per customer's specification	Database development, Analysis & programming	AutoCAD, Microstation and ArcGIS
GIS for Utility Networks	Utility Mapping (Electricity, Gas, Water, Sewage) - Rubbersheeting, digitization, data base design, attribute filling	As per customer's specification	Network rectification & adjustment	Smallworld, ArcFM, AutoCAD
Contour Maps preparation	Large scale preparation of Contour maps to provide an accurate graphical representation of cultural and natural features.	As per customer's specification	Data creation & analysis	ArcGIS / AutoCAD
Thematic Map Preparation	Preparation of Thematic maps to portray a particular theme on a geographic map for general information of spatial patterns in a region.	As per customer's specification	Data creation, analysis & programming	ArcGIS / AutoCAD

<p>TOPOGRAPHIC MAP Zoning & Contouring</p>	<p>3D modeling and analysis of effects of earthquakes and other influences on the region</p> <ul style="list-style-type: none"> Scanned images of earthquake-prone zones were digitized The topological information such as contour lines, streets, rivers, lakes and geographic information such as vegetation lines, state and district boundaries were digitized in specified layer The contour lines were drawn as per the elevation information provided on the scanned image. Digitized maps were rubber-sheeted and merged to obtain a single map. Plot of vectorized map was matched against the source hard copy on a lighted glass table. 	<p>As per customer's specification</p>	<p>Data creation, analysis & programming</p>	<p>ArcGIS</p>
<p>ZONING MAP Creation</p>	<p>Digitization of specific zones on the raster images.</p> <ul style="list-style-type: none"> Scanned images were taken as a reference and digitized using AutoCAD software as per the client's specification. Polygons were created for different zones. Filling work was done as shown on the scanned image. 	<p>As per customer's specification</p>	<p>Data creation, analysis & programming</p>	<p>ArcGIS</p>

<p>Geological MAP Creation</p>	<p>Capturing of points with its altitude and depth of minerals as attribute data.</p> <ul style="list-style-type: none"> Scanned images were registered as per the supplied geo-coordinates Points were captured Attributes such as altitude of point, depth of different type of material viz. Pb, Cu and Ba at the point location were captured Thorough quality check was done for attribute data correctness 	<p>As per customer's specification</p>	<p>Data creation, analysis & programming</p>	<p>ArcGIS / ERDAS Imagine</p>
<p>Processing of Ortho Photos</p>	<p>Planimetric Data Creation using Photogrammetry Technologies in 2D Environment</p>	<p>As per customer's specification</p>	<p>Data creation</p>	<p>Photogrammetry</p>

OFFICE LOCATIONS

CORPORATE OFFICE	US REPRESENTATIVE	GERMANY & FRANCE
<p>Mr. Ravi Pekala Plot No.E/54 & E/54/1, Infocity, Chandaka Industrial Estate, Patia Bhubaneswar - 751024, Orissa, India</p> <p>Telephone (India): General enquiries: +91 - 674 - 662 1016 Sales enquiries: +91 - 674 - 662 1007 +91 - 674 - 662 1008 +91 - 674 - 662 1009</p> <p>Telefax: +91 - 674 - 662 1000 Email: info@aabsys.com Email: ravi.pekala@aabsys.com</p>	<p>Mr. Lonnie B. Floyd 14001 Lowell Avenue, Overland Park, Kansas City, USA- 66223</p> <p>Mobile: +1 - 913 - 269 - 4430 Email: info@aabsys.com</p>	<p>Mr. Juergen Skucek Dipl. techn.rer.pol. 3, rue de la Haute Vienne F-67470 Niederroedern</p> <p>Tel: +33 388861406</p> <p>Mobil-D: +49 1717919391 Mobil-F: +33 650270998 Email: info@aabsys.com</p>